

Type HM14C Load Cell



Short description



- Nickel plated alloy steel IP68 column shear load cell
- Hermetically sealed
- Suitable for truck, track, hopper and other electronic weighing devices
- High accuracy
- Protected against lightning surges
- Current calibrated (sc option)

Non OIML approved

Available models

Capacity	Accuracy	Full article description
10t	C3/C4	HM14C-C3/C4-10t-15B(-SC)
20t	C3/C4	HM14C-C3/C4-20t-15B(-SC)
25t	C3/C4	HM14C-C3/C4-25t-15B(-SC)
30t	C3/C4	HM14C-C3/C4-30t-15B(-SC)
50t	C3/C4	HM14C-C3/C4-50t-15B(-SC)

Specifications and dimensions are subject to change without notice and do not constitute any liability

Type HM14C Load Cell

Detailed specifications HM14C

Accuracy class		C3	C4
Output sensitivity (= FS)	mV/V	1.5 ± 0.004	
Maximum capacity (E _{max})	t	10, 20, 25, 30, 50	
Max.number of load cell intervals	n _{LC}	3000	4000
Ratio of min. LC verification interval	$Y = E_{max} / v_{min}$	7500	10000
Combined Error	%FS	± 0.0200	± 0.0175
Minimum dead load	Of E _{max}	0%	
Safe overload	of E _{max}	150 %	
Ultimate overload	of E _{max}	300 %	
Zero balance	of FS	< ± 1.0 %	
Excitation, recommended voltage	V	5 ~ 12	
Excitation maximum	V	18	
Input resistance	Ω	700 ± 7	
Output resistance	Ω	703 ± 4	
Insulation resistance	MΩ	≥5000 (at 50VDC)	
Compensated temperature	°C	-10 ~ +40	
Operating temperature	°C	-35 ~ +65	
Storage temperature	°C	-40 ~ +70	
Element material		Nickel plated alloy steel	
Ingress Protection (acc. to EN 60529)		IP68	
ATEX classification (optional)		II1G Ex ia II1C T4	II1D Ex iaD 20 T73°C II3G nL IIC T4

Wiring

Wiring:

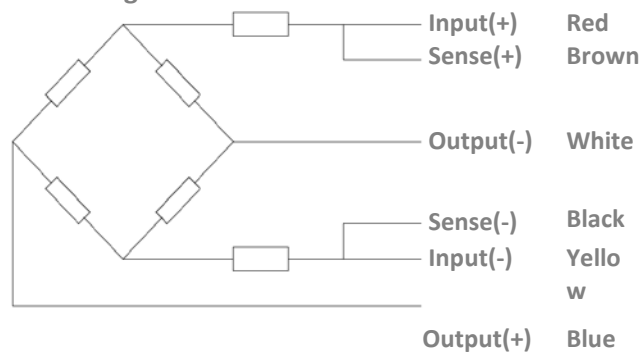
Shielded, 6 conductor cable.

Cable diameter: Ø6.3mm.

Standard cable length: 13m.

Shield not connected to element.

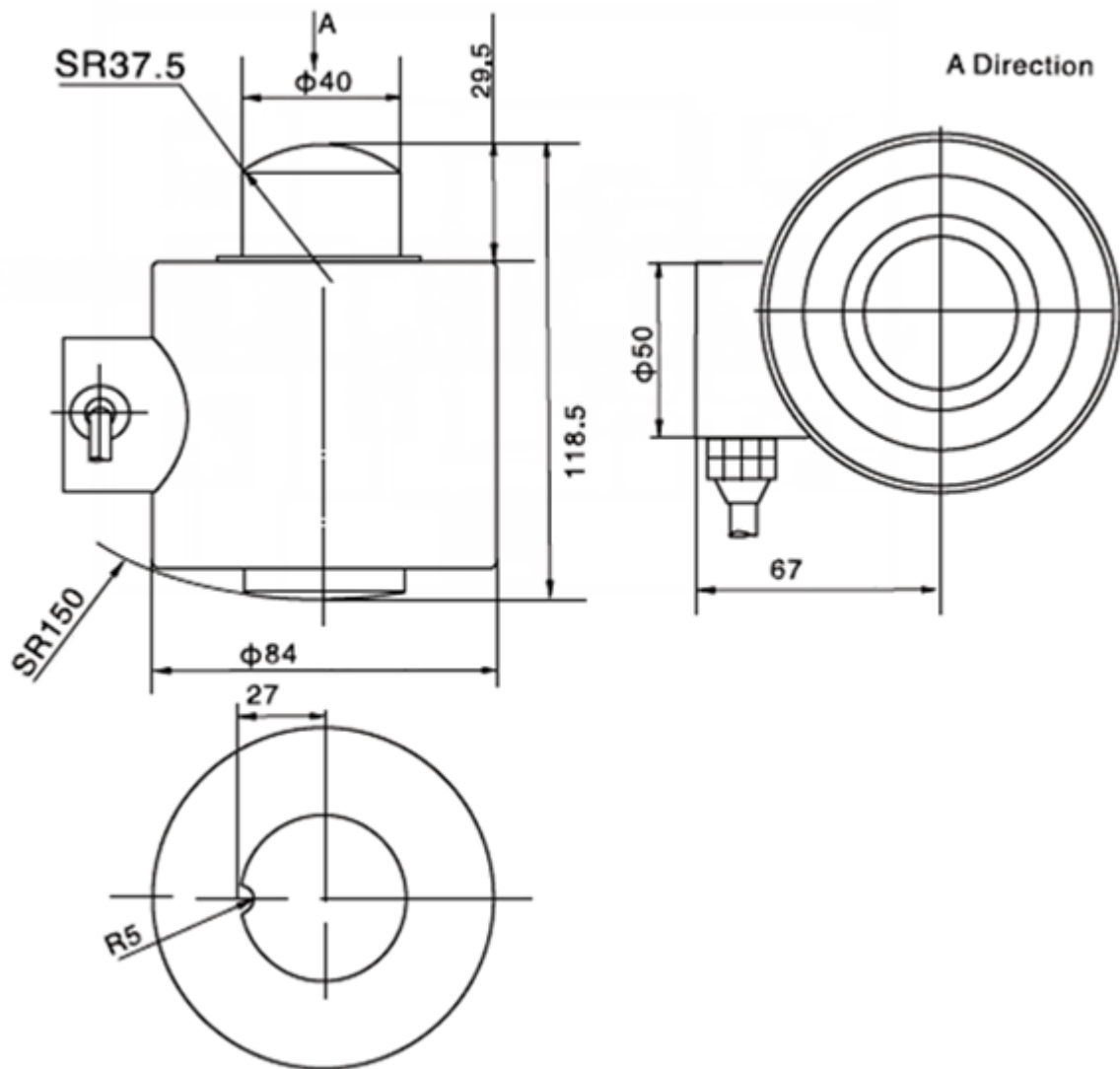
6-wire diagram



Specifications and dimensions are subject to change without notice and do not constitute any liability

Type HM14C Load Cell

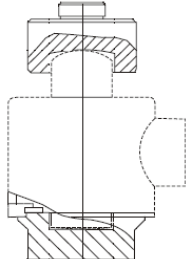
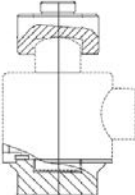
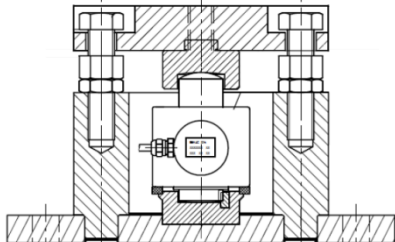
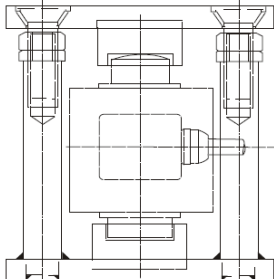
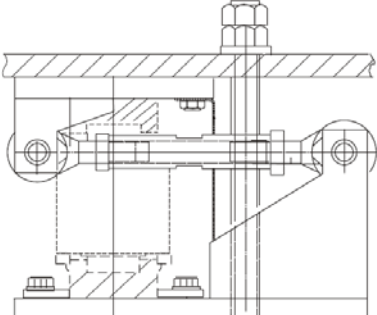
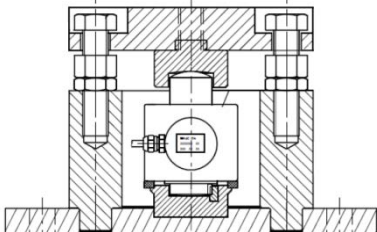
Dimensions in mm



Specifications and dimensions are subject to change without notice and do not constitute any liability

Type HM14C Load Cell

Available accessories

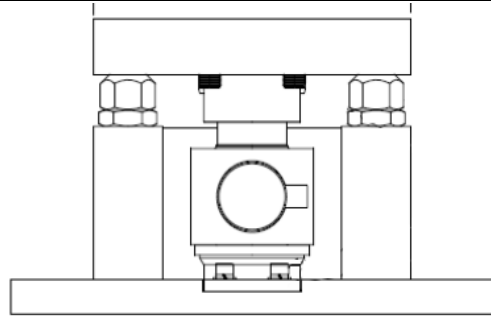
<p>BY-14-103-10-50t</p> <ul style="list-style-type: none"> • Easy installation • Good self-aligning ability • Stainless steel • Anti-reversal ability • Can be used under hazardous environments 	
<p>HY-14-104-10-30t</p> <ul style="list-style-type: none"> • Easy installation • Good self-aligning ability • Nickel plated alloy steel • Anti-reversal ability 	
<p>BM-14-411-10-50t Mount</p> <ul style="list-style-type: none"> • Stainless steel mount • Easy load cell access • Self aligning construction • Lift-off protection • Controlled horizontal movement 	
<p>BM-14-414-0.5-50t Mount</p> <ul style="list-style-type: none"> • Stainless steel mount • Easy load cell access • Lift-off protection • Controlled horizontal movement • Rocker support included with mount delivery 	
<p>HM-14-401-10-50t Mount</p> <ul style="list-style-type: none"> • Compact construction • Easy installation • Self aligning construction • Horizontal locating ability • Anti-reversal ability • Nickel plated alloy steel 	
<p>HM-14-405-10-50t Mount</p> <ul style="list-style-type: none"> • Nickel plated alloy steel mount • Lift-off protection • Easy load cell access • Controlled horizontal movement 	

Specifications and dimensions are subject to change without notice and do not constitute any liability

Type HM14C Load Cell

HM-14-434 10-50t Tank mount

- Nickel plated alloy steel
- Easy load cell access
- Lift-off protection
- Controlled horizontal movement



Specifications and dimensions are subject to change without notice and do not constitute any liability